

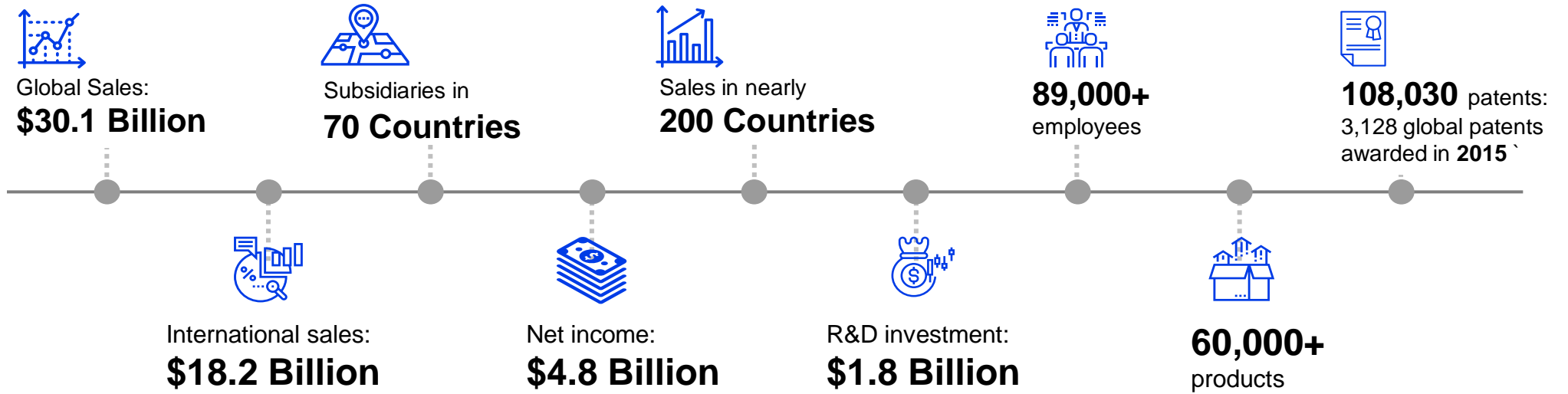
# Lead the Change

Rajiv Gupta  
Division Manager,  
Infection Prevention Division  
April 2017

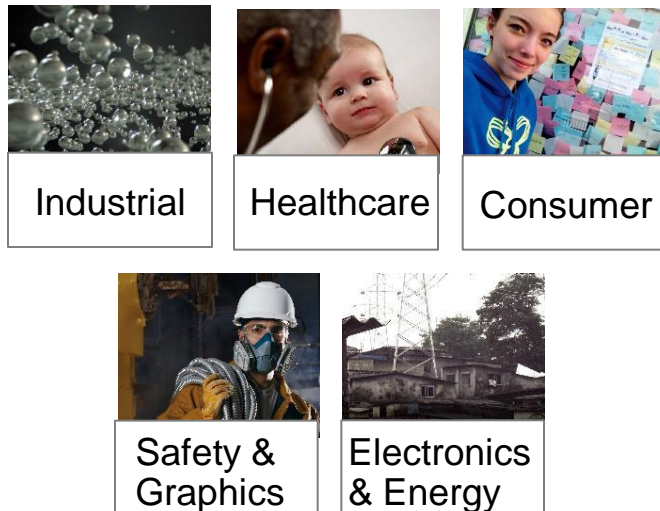


# 3M Overview

Since  
**1902**



## Our Business Groups



## Preventing Infection. Better Healthcare Practices.





# 3M Initiatives



## Association with Guideline Bodies



Supporting Infection Prevention Guideline Development bodies around the world as board members



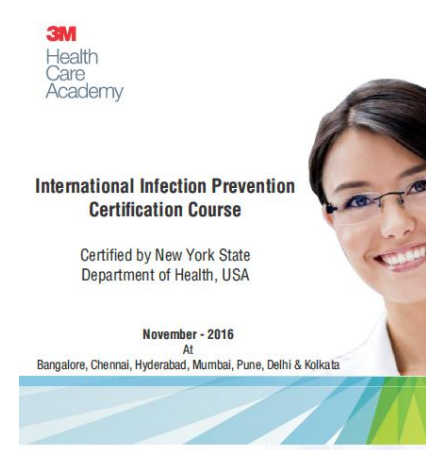
## Process Improvement Projects in Hospitals



Partnership with hospitals for development and implementation of CSSD and OR protocols



## Training Courses



Providing customized education and certifications for CSSD, OT and nursing professionals



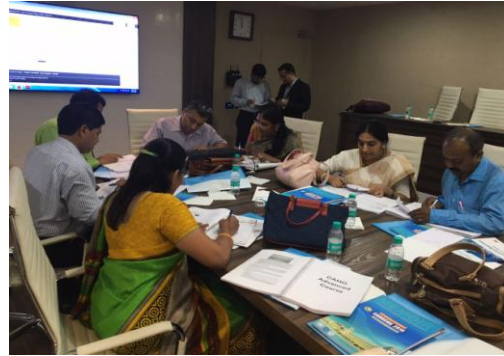
## CSSD & OR Forums



Provide Platform for CSSD and OR Managers across the country for knowledge sharing and learning

# Our association so far

## 3M CAHO CSSD Workshop



Sl. No. of Reference (IAAMA, IMAA, IMAA)

Sl. No.	Reference	Observations
M 1.1.1	Reference (IAAMA, IMAA)	Reusable items separated from waste at point of use
M 1.2.1	217B section 2.3 AORR RP: Care of Instruments, Rec. V (excluding sharps)	Contaminated disposable items are discarded appropriately
M 1.2.1	217B section 2.3 AORR RP: Care of Instruments, Rec. VI	Gross soil is removed from instruments at point of use if immediate reprocessing not possible
M 1.4.1	217B section 4.4 AORR RP: Care of Instruments, Rec. VI	Solid items should be kept moist (soiled towel, enclosure foam or splash protect)
M 1.5.1	217B section 4.4 AORR RP: Care of Instruments, Rec. VI	Soiled, decontaminated containers are provided for soiled instruments
M 1.6.1	217B section 4.4 AORR RP: Care of Instruments, Rec. VI	Use of fracture resistant, leak-proof containers for soiled items
M 1.7.1	217B section 4.4 AORR RP: Care of Instruments, Rec. VI	Soiled items must be contained during transportation

### Fundamentals of Sciences of Microbiology, Sterilization and Disinfection



CSSD Managers Meeting for validating the course contents of the CSSD Training Courses and the CSSD Guidelines

## Online Module Deployment



**“Dare to make a difference”**

– Join the multilevel training program



**Hospitals have a commitment to patient safety - by providing the safest and best quality care to patients.**

Each day, millions of medical procedures are performed in healthcare facilities worldwide, with caregivers and patients relying on the availability and use of a wide range of supplies, instruments and equipment. These devices must be properly cleaned, disinfected and /or sterilized, and inspected for quality to ensure they are in good working condition and available at the point of care.

In most healthcare facilities, the Central Sterile Supply Department (CSSD) plays a critical role in providing the items required to deliver quality patient care. To support infection control within the healthcare facility, the CSSD staff members must be well-trained, competent and committed to “doing what’s right” every step of the way. This means ensuring that shortcuts are not taken and that processes and practices are consistently followed.

Centralizing the reprocessing of reusable devices helps ensure uniform standards of practice, while allowing for improved workflow. It also facilitates the training and education of skilled technicians who must be knowledgeable about the standards, complexities, challenges, risks and techniques associated with the CSSD function.

The consistent provision of quality disinfection and sterilization services can be a monumental task; however, it is a vital link in providing safer healthcare.

To pursue these objectives, the Consortium of Accredited Hospitals Organization, India (CAHO) and 3M would like to invite you to participate in the CSSD multi-level training program and an audit system for hospitals to improve compliance towards best practices.

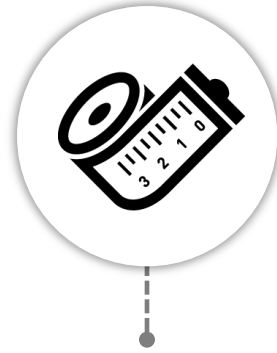
# Monitor, Measure & Improve



## Monitor

Observe and check the quality of processes over a period of time for systematic review

Support with audit tools and protocol development for OR and CSSD that help in checking the necessary parameters required for ensuring the quality of processes



## Measure

Conducting audits to identify gaps in current processes and analyzing them for defining areas of improvement

### How 3M can help?

Our team of scientific affairs with global technical expertise can help conduct audits that help identify and prioritize areas of improvement



## Improve

Undertaking process improvement projects over a defined timeline & measuring the success later

Our team of scientific affairs can help by providing training and handholding for implementations of process improvement projects and also conduct post-audits



# Future Plans

## Basic Course

A free course available to all the staff of CSSD. We highly encourage the course for every CSSD technician and especially as a mandatory onboarding course for new staff in CSSD.

## Advanced Course

It will be a paid course and available for personnel who have successfully completed the basic course. The module can be available with an online version to be hosted on 3M platform and Classroom version run via CAHO quality centers. Highly recommended for experienced staff, Supervisors and CSSD managers.

## Expert Course

As an extension of the advanced course, we will be glad to sponsor 3 personnel every year to the international certification program. This will be valid for CSSD managers who successfully complete the advanced course and meet the set criteria of compliance. Interested hospitals should be open to allow audit compliance by the CAHO team.

We are collaborating with International Association of Healthcare Central Service Material Management (IAHCSMM) which offers professional certification programs that are recognized throughout the healthcare industry for their quality and comprehensiveness.

[Enroll Now](#)

The background is a complex, abstract composition of overlapping, semi-transparent geometric shapes in various shades of blue, ranging from light cyan to deep navy. The shapes are primarily triangles and polygons, creating a dynamic, crystalline effect. The text 'Thank you' is positioned in the upper-left quadrant, rendered in a clean, white, sans-serif font.

Thank you